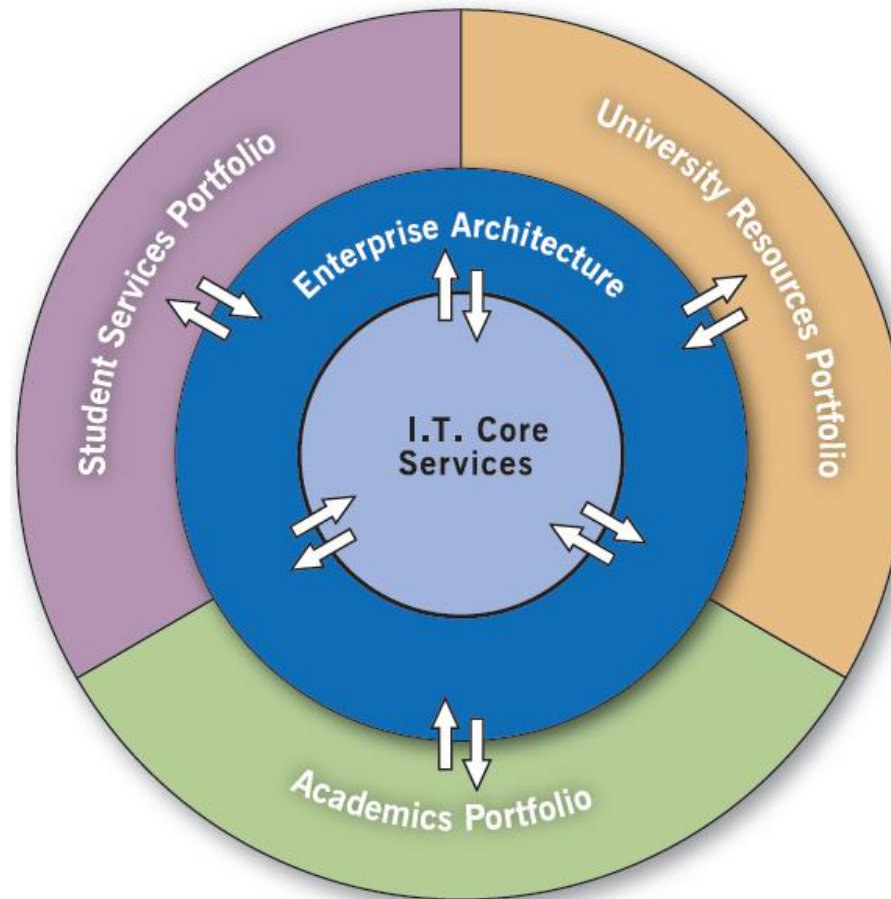


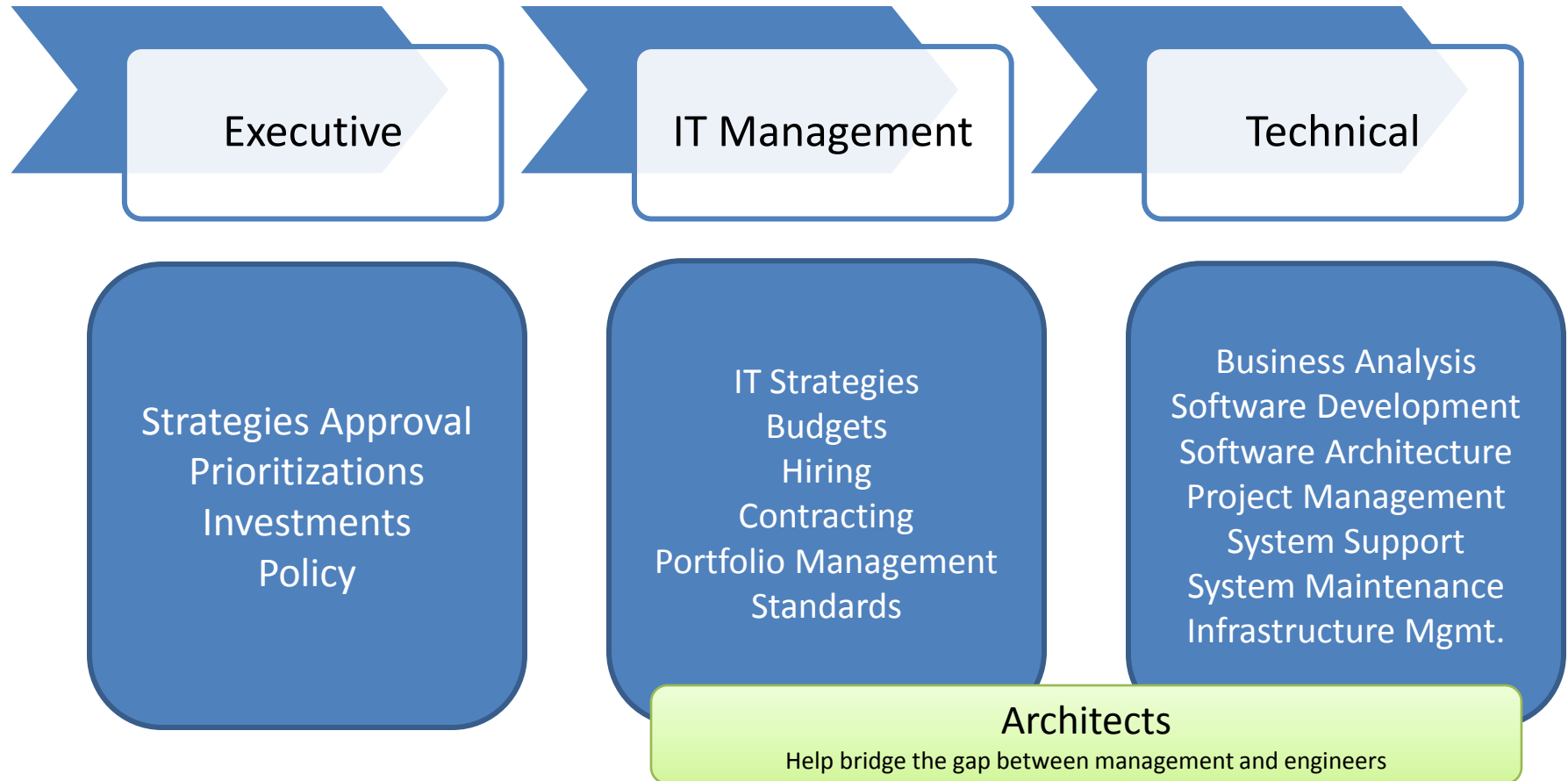
# IT Reorganization Information Meeting



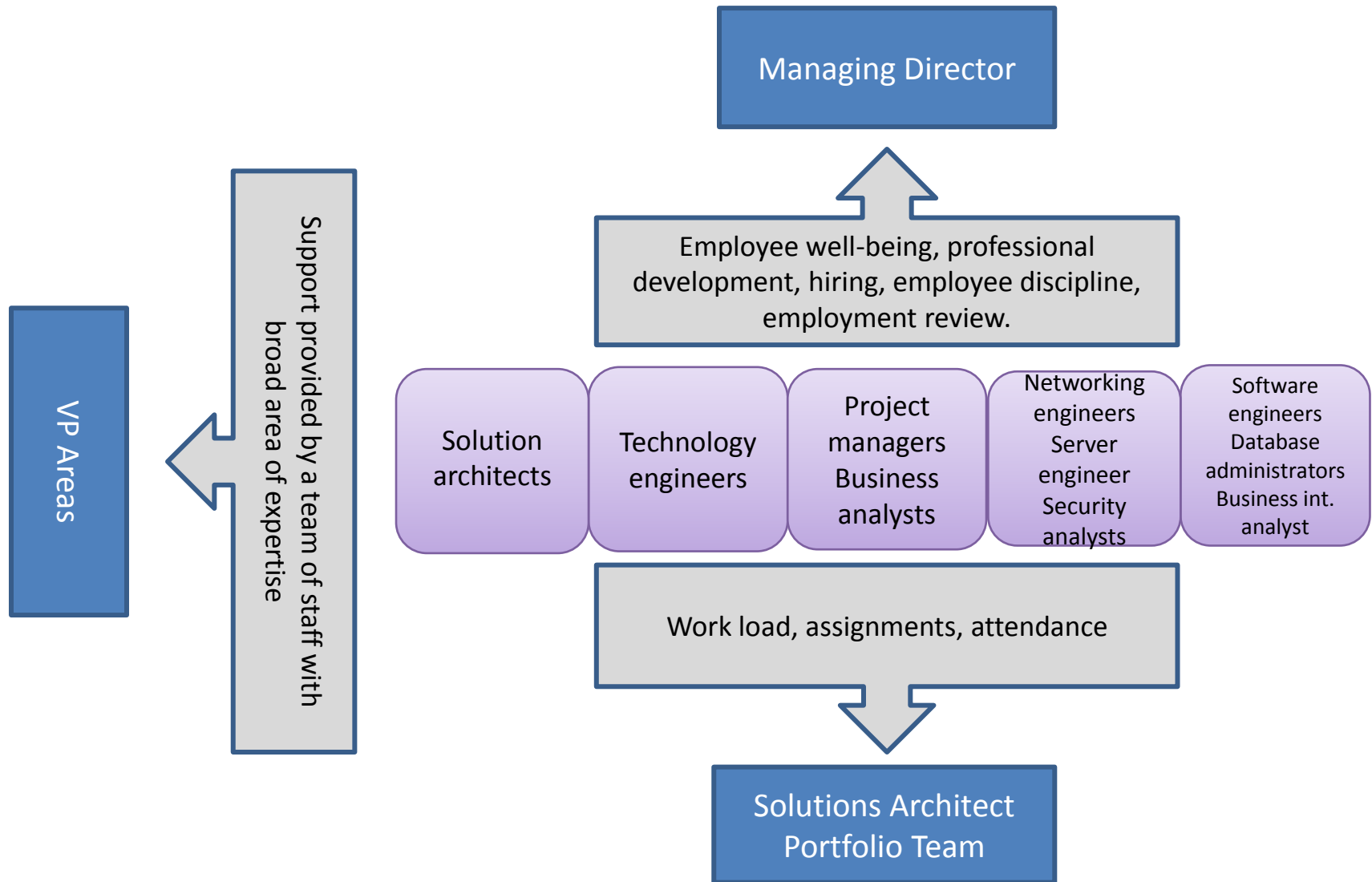
# Guiding Principles

- Agile & efficient.
- Elimination of silos within IT.
- Highly skilled expertise.
- Improved IT Portfolio Management System.
- Better VP oversight.
- Foster Christ-like attributes & professionalism.

# Stewardships

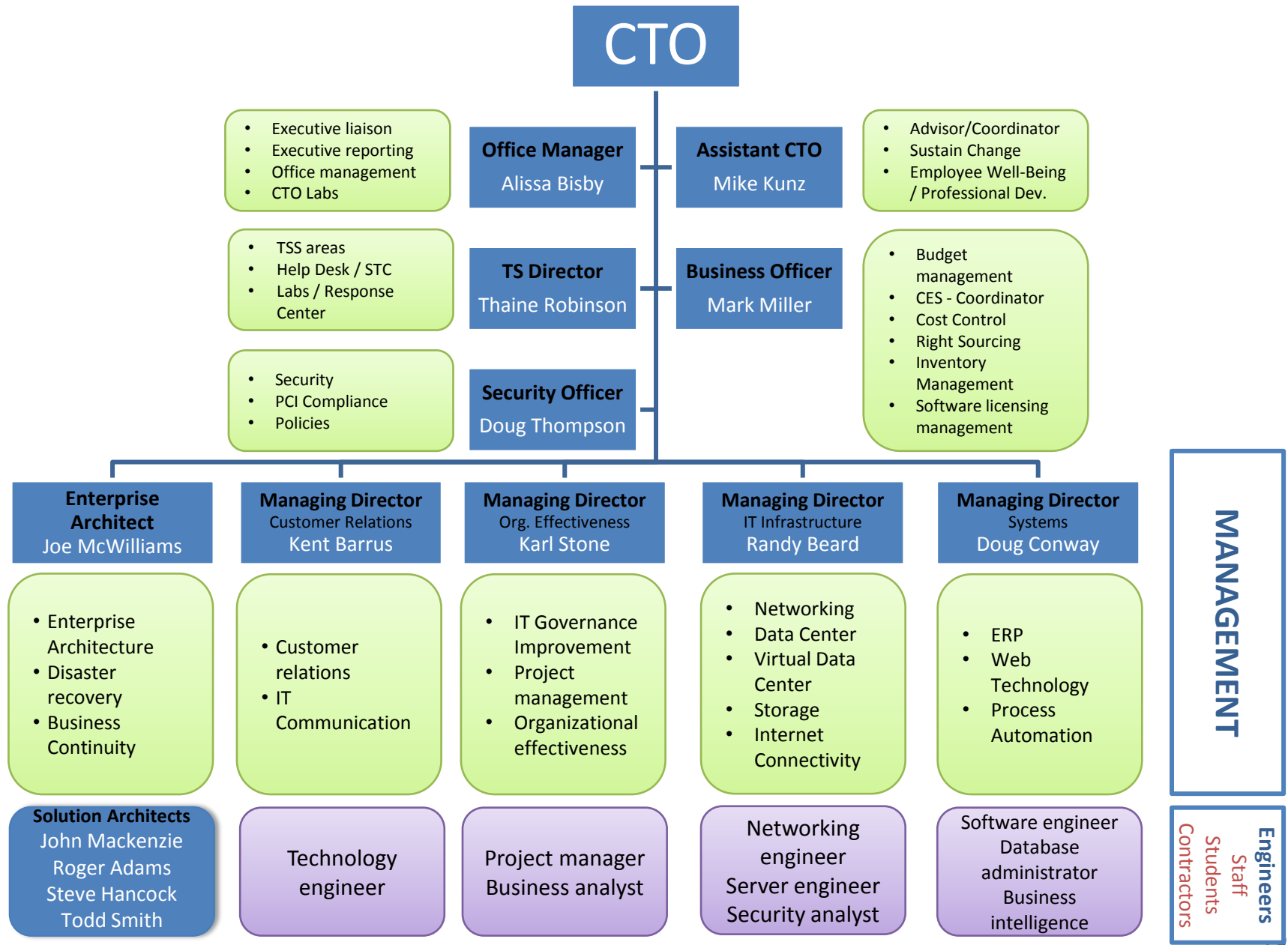


# Matrix Reporting Model

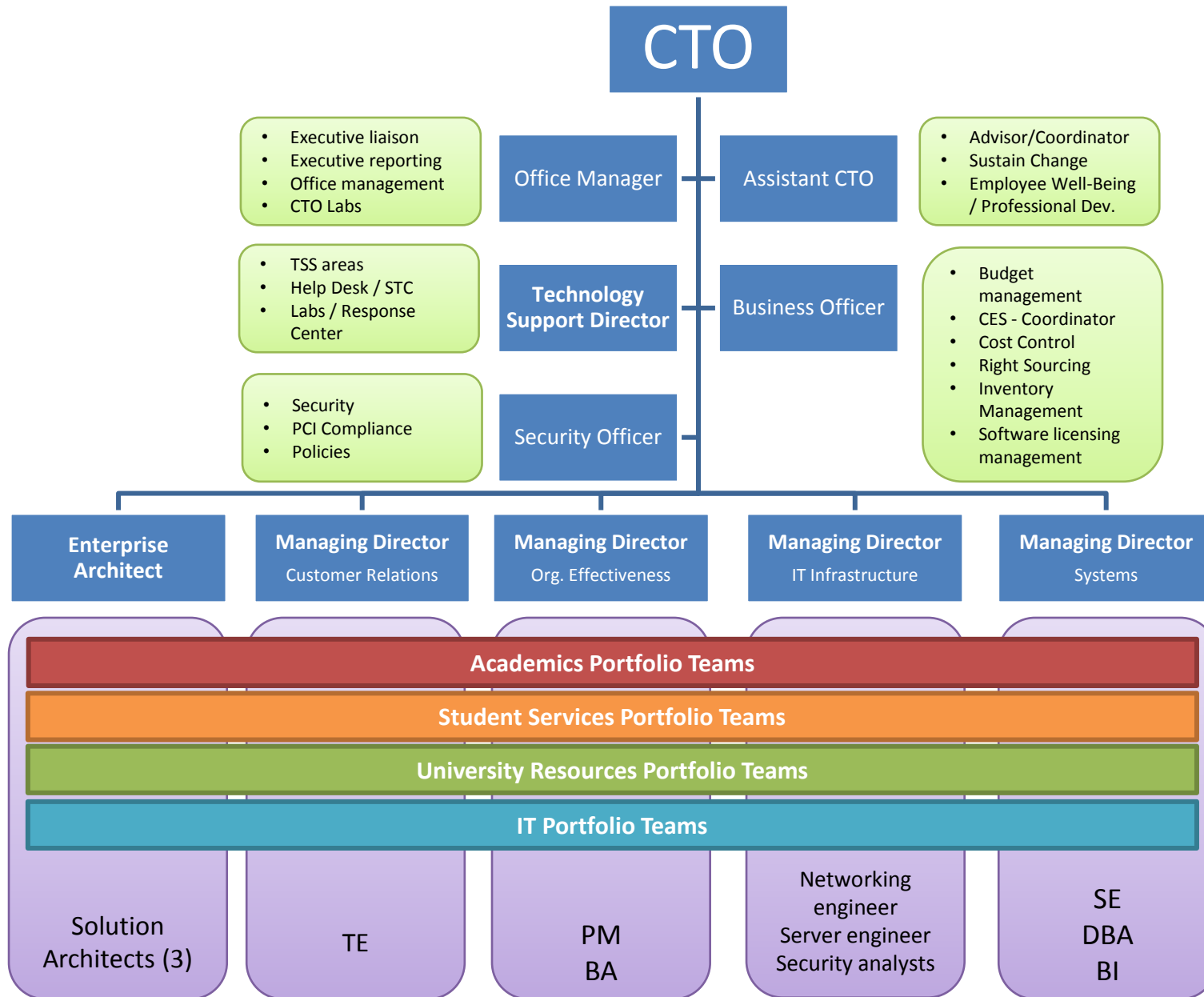


Note: Under this model, it is expected that the technical staff will be self-driven, self-motivated, and highly productive employees.

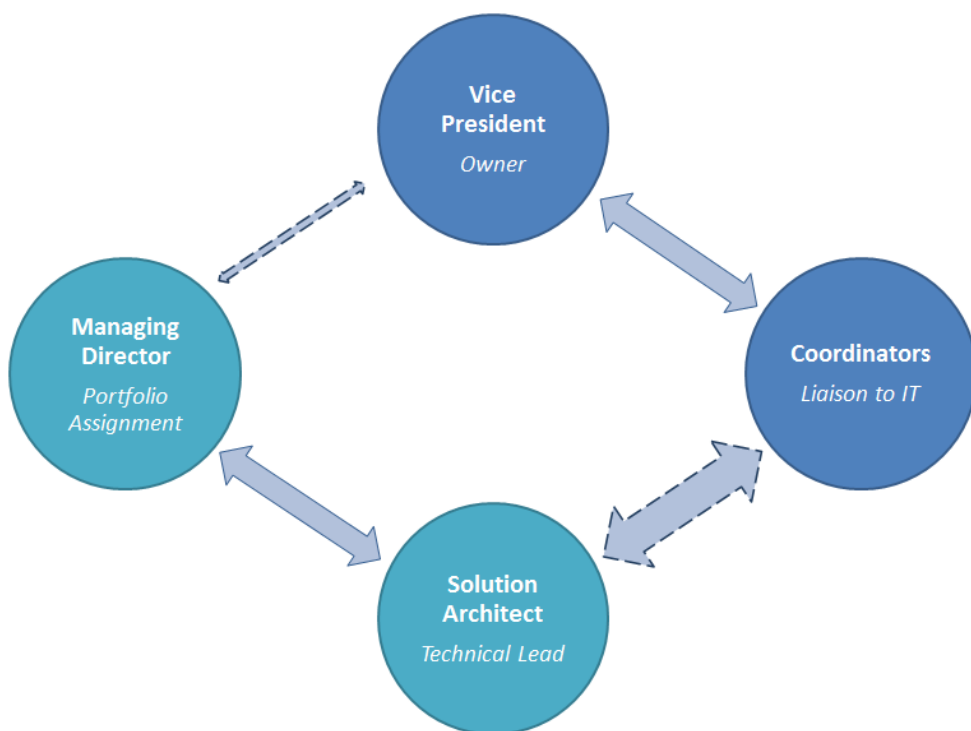
# IT Functional Organization



# IT Operational Organization



# Portfolio Stewardship



Roles	Description
Vice President	As the portfolio owner, the VP defines the priorities and where IT should put its resources.
Coordinator	The coordinator helps the end users to define technology needs, helps the VP manage the portfolio, and is the users liaison to IT for testing and new technology implementation.
Solution Architect	The solution architect is the technical expert who ensures sound technical solutions are provided for an area and that all solutions fit into the enterprise architecture, and help ensure the resources within a Portfolio is being used in an efficient manner
Managing Director (Portfolio Assignment)	The portfolio manager ensures that the portfolio management process is working and manages the resources associated with his assigned portfolio to the satisfaction of the VP area and helps meet the goals of the University.

# ACADEMICS PORTFOLIO



**Kent Barrus**  
Managing  
Director



**Steve Hancock**  
Solution  
Architect



**Gary Abbott**



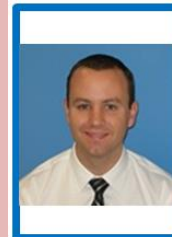
**Dan Gordon**



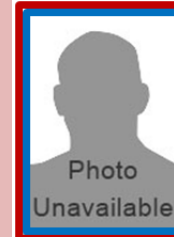
**Orren Squires**



**Mark Ewart**



**Sam Brubaker**



**OPEN**



**Darick Carpenter**



**Brad Marshall**



**Trevor Wilkerson**

Technology Engineers

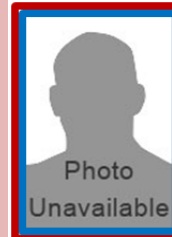


**Scott Bailey**

Project Managers



**OPEN**



**OPEN**

Business Analysts



**OPEN**

Software  
Engineers



# STUDENT SERVICES PORTFOLIO



Doug Conway  
Managing  
Director



John Mackenzie  
Solution  
Architect



Tom Fleming



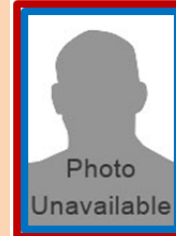
OPEN



Kade Smith



Ryan Andreasen



OPEN



Randy Goodman



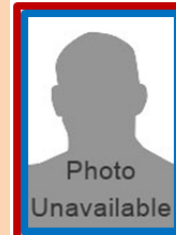
OPEN

Technology Engineers

Project Manager /  
Business Analyst



Gordon Young



OPEN

Software Engineers

# UNIVERSITY RESOURCES PORTFOLIO



**Karl Stone**  
Managing  
Director



**Roger Adams**  
Solution  
Architect



**Jason Zimmer**



OPEN



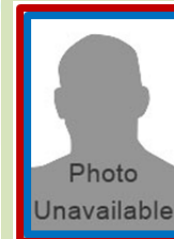
**Joseph West**



**Kort Black**



**Kurt Miller**



OPEN



**John Martinez**



OPEN

Technology Engineers

Project  
Manager

Business  
Analyst



**Derek Fullmer**

Software Engineers

# IT CORE PORTFOLIO





























**Randy Beard**  
Managing  
Director



**Joe McWilliams**  
Enterprise  
Architect



**Todd Smith**  
Solution  
Architect

<div> Tony Derricott</div>		<div> Photo Unavailable OPEN</div>	<div> Photo Unavailable OPEN</div>	<div> Photo Unavailable OPEN</div>	<div> Photo Unavailable OPEN</div>																		
				PM																			
<div> Photo Unavailable OPEN</div>		<div> Photo Unavailable OPEN</div>	<div> Paul Jeppson BA</div>		Software Engineer																		
Technology Engineers																							
<div> Roy Sleight BI</div>		<div> Terrance McKay DBA</div>		<div> Photo Unavailable OPEN System Analyst</div>	<div> Photo Unavailable OPEN Security Analyst</div>																		
												Infrastructure Engineers											
												<div> Tony McCarty</div>	<div> Sam Tsukamoto</div>	<div> Stephen Parker</div>	<div> George Cromwell</div>	<div> Peter Stilling</div>	<div> Shaun Sessions</div>	<div> Richard Hollinger</div>					
												<div> Blake Grover</div>	<div> Travis Williams</div>	<div> Kyle Fenton</div>	<div> Photo Unavailable OPEN</div>	<div> Photo Unavailable OPEN</div>	<div> Photo Unavailable OPEN</div>	<div> Photo Unavailable OPEN</div>					

# I.T. COORDINATORS



**DEAN ALLEN**  
ACADEMIC PORTFOLIO



**DEBBIE PECK**  
STUDENT SERVICES  
PORTFOLIO



**ROGER JACKSON**  
UNIVERSITY RESOURCES  
/ ADVANCEMENT  
PORTFOLIO

# QUESTIONS?